



HSM SECURIO B35 - 1.9 x 15 mm + external autom. oiler



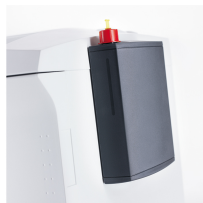
HSM SECURIO B35 document shredder

For more data security in the workplace. The excellent document shredder with an intake width of 400 mm for professional data destruction in an open-plan office for up to eight people.

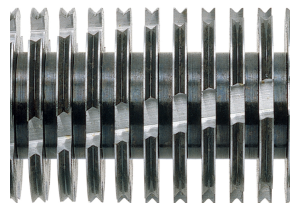
Technical data

Order number:	19221110	Voltage / Frequency:	230 V / 50 Hz
EAN	4026631047210	Intake width:	400 mm
Cutting type:	particle cut	Container volume / collecting:	130 l
Cutting width:	1,9 mm	Noise level (idle operation):	ca. 56 dB(A)
Particle length:	15 mm	Weight x Depth x Height:	620 x 525 x 870 mm
Security level (DIN 66399):	E-4 F-2 P-5 T-5	Weight:	54,6 kg
Cutting capacity in sheets 80g/m²:	14 - 15	Shredder material:	Paper, Staples and paper clips, Credit card
Power consumption:	590 W		

Product information



For a consistently high cutting performance, this low maintenance document shredder has an external automatic oiler as an option.



The induction-hardened, solid steel cutting rollers guarantee durability.



Reusable cardboard box as bin for shredded material.



For continuous operation

The powerful motor ensures a high cutting capacity and reliable continuous operation.



Energy-saving

In stand-by mode, intelligent control programme EcoSmart ensures there is an exceptionally low power consumption of 0.1 watts.



High level of user safety

The safety element prevents unintentional entry of materials into the machine and thereby increases the user safety.



Automatic start/stop

The operation is very easy: the device starts automatically when fed paper and automatically stops after shredding is complete.



Anti-paper jam function

The paper feed with overload protection reduces paper jams and sustains the high throughput of paper.



Convenient emptying

Robust wooden cabinet with castors. After opening the door, the reusable collecting bag can be easily removed and emptied.



www.huer-engel.de/uz174

Lifetime warranty on solid steel cutting rollers at security levels P-2 to P-5 (according to ISO/IEC 21964).

