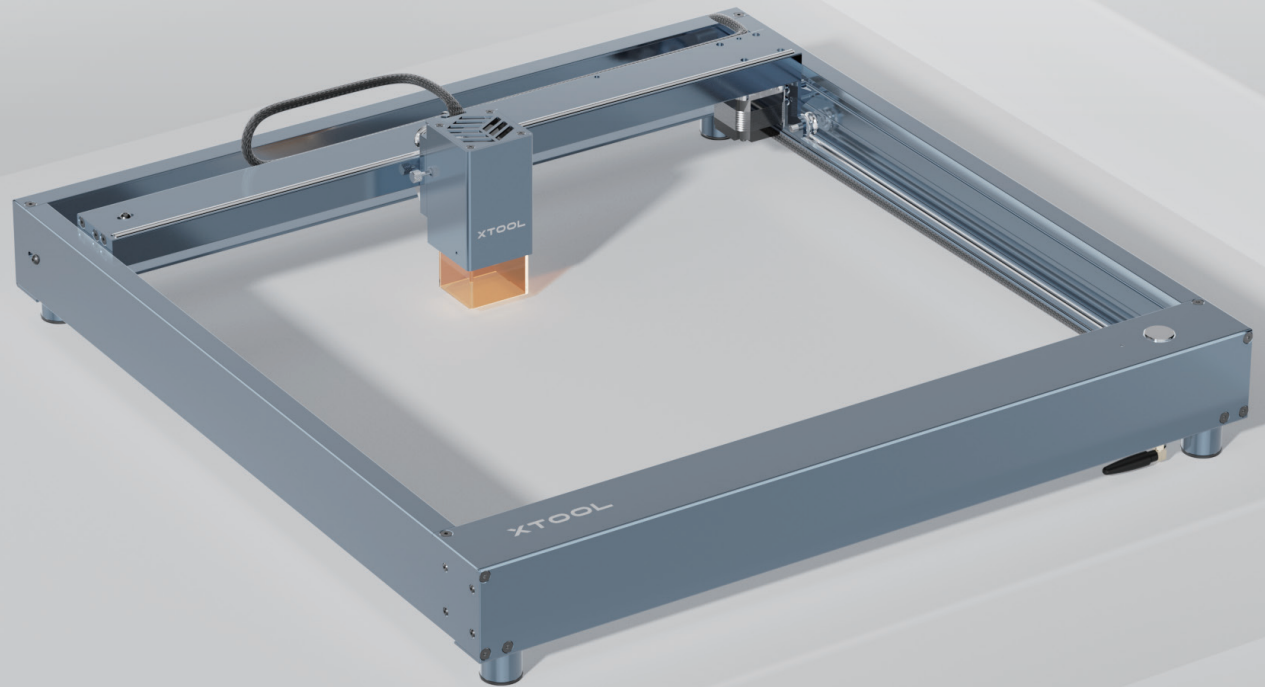




reddot winner 2022



XTOOL



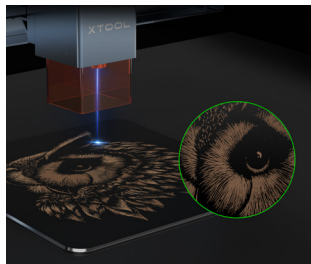
Software



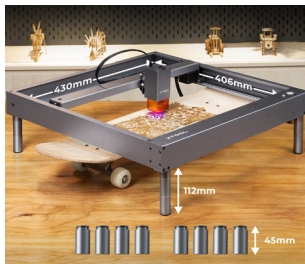
User manual

What's xTool D1

The xTool D1 is a desktop-size machine for laser cutting and engraving ideal for small businesses, hobbyists, designers, artists, and other technology enthusiasts and people with entrepreneurial spirit. From assembly to operation, the steps that users need to follow have been simplified. The xTool D1 offers high-quality results with a sturdy design, helping creators to focus more on their ideas.



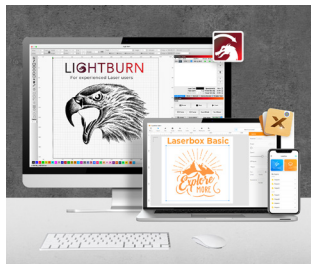
With 0.01mm accuracy and ultra-fine 0.08*0.08mm compressed laser spot to present the best details.



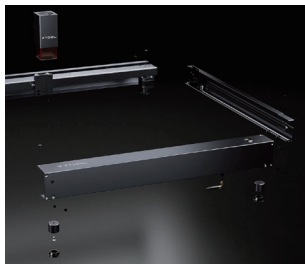
Ample working area of 432*406mm to carry out batch processing in one go and additional risers to support thicker objects and special attachments.



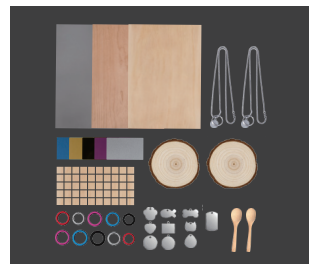
With Laser shield and work automatically stops when the machine moves or communication is interrupted to ensure safety operation.



The dedicated software available for multi-devices while xTool D1 also compatible with LightBurn.



The all-steel wheels and shafts last 3 times longer than plastic wheels in comparable machines.



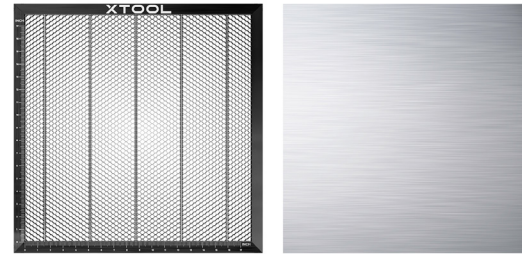
Stainless steel, acrylic, kraft paper, cardboard, wood board, leather, plastic, MDF, glass, marble, jade and more ideas to explore.

Great accessories to choose from



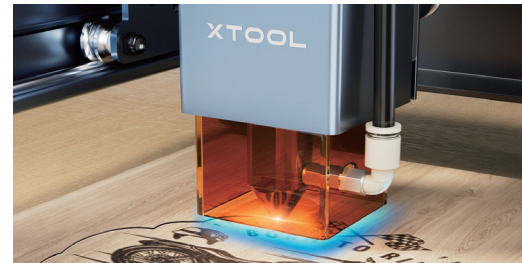
RA2 Pro

The world's first 4-in-1 rotary engraving module not only for normal cylinders but also for extra-long objects, irregular cylinders, balls, and rings.



xTool Honeycomb panel set

Improves air circulation and protection to the workspace. User-friendly positioning and dimensional evaluation of processed objects thanks to the scales included.



Air assist set

A steady stream of high-pressure air blows away fumes, increasing the efficiency of the laser operation, saving processing time, and achieving better results.

Tech Specification

MODELS	xTool 5W	xTool 10W	MODELS	xTool 5W	xTool 10W
LASER SYSTEM			MISCELLANEOUS		
Machine Power	36W	60W	Voltage Input	100-240V 50-60HZ	
Laser Electric Power	25W	40W	Voltage Output	12V 3A 36W	12V 7A 84W
Laser Module Output Power	5W	10W	SOFTWARE REQUIREMENTS		
Laser Spot	0.08*0.08mm (0.003*0.003 inch)		Operating Systems	Windows/macOS/Android/iOS	
Wavelength	455 ±5 nm		Control Software	Laserbox Software/Laserbox App/LightBurn	
Routing Speed	160 mm/s (6.2inch/s)		SIZE AND WEIGHT		
			Product Weight	5kg	
			Product Size (L * W * H)	600*590*150 mm (23.6*23.2*5.9 inch)	